

# ***Digital Link Manager***

---


***Version 2.0E***

On-line Manual

***PCLK-LSA2***

- Duplication of any or all of the contents of this software and instruction manual or lending of this software to third parties without the express permission of the copyright holder is strictly prohibited by copyright law.
- Sony cannot be held liable in any way for monetary losses, lost profits or claims from third parties arising from the use of this software.
- Should any manufacturing defects occur, Sony's responsibility shall be limited solely to replacing said defective merchandise.
- This software is approved for use only with the specified equipment.
- Sony reserves the right to change software specifications without prior notice.

Program © 2000-2001 Sony Corporation  
 Documentation © 2001 Sony Corporation  
 © 2001 Sony Corporation All rights reserved.

- Microsoft, MS-DOS and Windows are the registered trademarks of U.S. Microsoft Corporation in the U.S. and other countries.
- IBM and PC/AT are the registered trademarks of U.S. International Business Machines Corporation.
- All other names of systems, products and services are trademarks of their respective owners. In the manual, the <sup>TM</sup> or <sup>®</sup> mark are not specified.
- Adobe<sup>®</sup> and Adobe<sup>®</sup> Acrobat<sup>®</sup> Reader are trademarks of Adobe Systems Incorporated.
-  is the registered trademarks of Sony Corporation.

---

# Table of contents

---

## Preparation

Names and function of screen .....	4
Main Window .....	4
Audio Rack View .....	5
Function View .....	6
Combination View .....	15

---

## Operating a CD player

Listening to a CD .....	18
Listening to a CD using the Main Window .....	18
Listening to a CD using the play list .....	18
Playing tracks in a favourite order .....	19
Changing the displayed language ....	21

---

## Operating the tuner

Listening to the radio .....	22
Listening to the radio in the Manual or Auto mode .....	22
Presetting a radio station .....	22
Preset tuning .....	23
Assigning a name to a station .....	24

---

## Operating an MD deck

Listening to an MD .....	26
Listening to an MD using the Main Window .....	26
Listening to an MD using the play list .....	26
Playing tracks in a favourite order .....	27
Auto Pause Play .....	28
Auto Space Play .....	28
Assigning a name to an MD .....	29
Recording to an MD .....	30
Making setups for recording ...	30
Recording from a CD to an MD .....	31

Recording from the radio to an MD .....	32
--	----

Recording from the component connected to the STR-LSA1's ANALOG IN connectors to an MD .....	33
---	----

Recording from your computer to an MD .....	34
--	----

---

Editing recorded MDs .....	36
----------------------------	----

Moving recorded tracks (MOVE) .....	36
--	----

Dividing recorded tracks (DIVIDE) .....	37
--	----

Combining recorded tracks (COMBINE) .....	38
--	----

Erasing recorded tracks (ERASE) .....	39
--	----

Erasing part of a track (A-B ERASE) .....	40
--	----

Undoing the last edit (UNDO) .....	41
---------------------------------------	----

Changing the track level after recording (S.F EDIT) .....	42
--	----

---

## Operating your computer

Listening to audio files .....	44
--------------------------------	----

Registering audio files to a play list .....	44
---	----

Listening to an audio file using the Main Window .....	45
---	----

Listening to an audio file using the play list .....	46
---	----

---

## Other Features

Adjusting the sound .....	47
---------------------------	----

Speaker balance (SP.Balance) ...	47
----------------------------------	----

Parametric equalizer (Parametric EQ) .....	47
---	----

Equalizer (EQ) .....	48
----------------------	----

Presetting an adjusted sound ....	49
-----------------------------------	----

Using the EQ bank .....	49
-------------------------	----

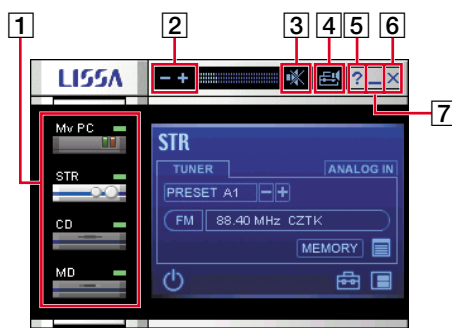
# Names and function of screen

## Main Window

If two or more STR-LSA1s are connected, only one of them can be attached at a time. When you want to attach the other STR-LSA1, first right-click the icon of the currently attached STR-LSA1 and use the right-click menu to detach it. Then right-click the icon of the desired STR-LSA1 and use the right-click menu to attach it.

### Note

**Do not connect or disconnect i.LINK connecting cables while the software is starting up.**



#### 1 Audio Rack View

Click an icon to select a function. You can select one from your computer, STR-LSA1, CDP-LSA1 or MDS-LSA1.

#### 2 Volume up/down buttons

#### 3 Muting on/off button

#### 4 Sound window open button

You can adjust the speaker balance, Parametric EQ and EQ (bass, mid and treble).

#### 5 Help button

Click this button to open Help.

#### 6 Close button

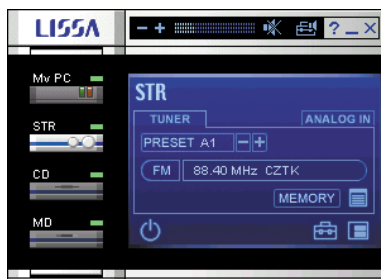
Click this button to quit Digital Link Manager.

#### 7 Minimise button

Click this button to close the Main Window.  
To open the window, click "LISSA" on the Taskbar.

## Audio Rack View

When you click an icon in the Audio Rack View, the active function is switched and the corresponding Function View appears in the Main Window.



### Note

The displayed icon differs according to the condition of the components etc.

### Tip

When you right-click an icon, the menu for the component you selected appears.

## Function View

The Function View is displayed for the component selected on STR-LSA1.

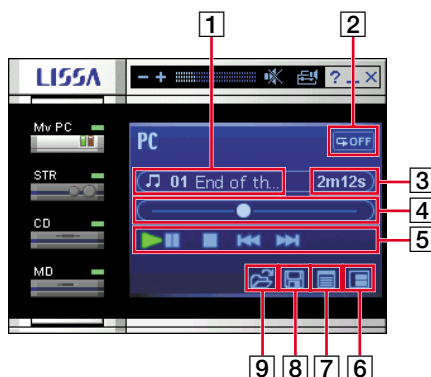
If STR-LSA1 cannot be found or is not connected, the Function View is displayed for the component selected in the Audio Rack View.

When you right-click on the Function View, the menu for the component appears.

### Note

When you select a detached component, no information appears in the Function View.

### My PC (Computer)



**1 List/Track name display**

Click to display the play list and select a track.

**2 Repeat button**

Click this button to select ("RepeatAll"), ("Repeat1") or ("RepeatOff").

**3 Time display**

The elapsed playing time is displayed.

**4 Track position slide bar**

Drag to the left or right for locating a desired point in a track.

(continued)

**5 PC operation buttons**

Play/Pause button



Stop button



AMS (Previous/Next) buttons

**6 Combination button**

Click this button to switch to the Combination View. (only when MDS-LSA1 is attached to the i.LINK configuration)

**7 Play list button**

Click this button to display the play list.

**8 Save button**

Click this button to store as a play list the newly created playing order of audio files.

**9 Load button**

Click this button to load a preset play list.

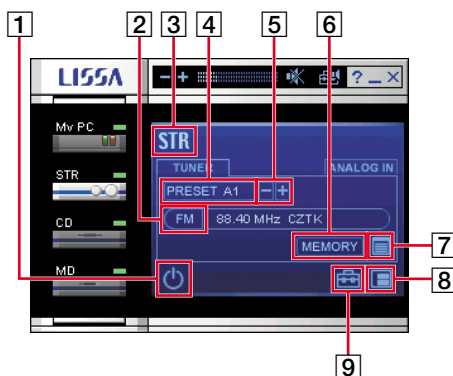
**Right-click menus**

- Load Playlist  
Select to load a preset play list.
- Save Playlist\*  
Select to store as a play list the newly created playing order of audio files.
- Add music file  
Select to add an audio file to the play list.
- All erase  
Select to erase all audio files on the play list.
- Previous
- Play
- Stop
- Pause
- Next
- Repeat  
Select to switch between "RepeatOff", "RepeatAll" or "Repeat1".
- List  
Select to display the play list.

\* This may be greyed out when there are no audio files on the play list.

(continued)

## STR (Tuner)



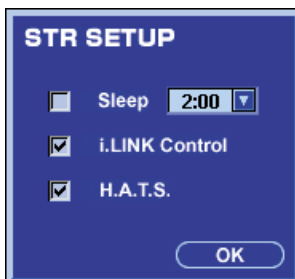
- 1 Power switch**
- 2 Band button**  
Click this button to switch between “FM” or “AM”.
- 3 Ping display**  
Click “STR” to display “▶▶◀◀” in the front panel display of STR-LSA1.
- 4 Tuning mode button**  
Click this button to select “MANUAL”, “AUTO” or “PRESET”.
- 5 Tuning buttons**  
Click these buttons to tune in a station.
- 6 Memory button**  
Click this button to preset a radio station.
- 7 Preset list button**  
Click this button to display the preset list.
- 8 Combination button**  
Click this button to switch to the Combination View. (only when MDS-LSA1 is attached to the i.LINK configuration)

(continued)




**9 STR setup button**

Click this button to display the STR setup window.  
You can use the Sleep Timer function, and set the i.LINK Control function and H.A.T.S. control function (refer to the operating instructions for STR-LSA1).



Click each function to be activated (a check appears). Click again to deactivate a function.

When you use the Sleep Timer function, click  and select a desired time. While this function is activated, the remaining time is displayed and you cannot change the time to turn off.

**Right-click menus**

- Attach  
Select to attach a component connected by i.LINK connecting cable to the i.LINK configuration.
- Detach  
Select to detach a component connected by i.LINK connecting cable from the i.LINK configuration.
- PowerOn/Off
- Function\*<sup>1</sup>  
Select to switch between “Tuner” or “Analog in”.
- SetUp\*<sup>1</sup>  
Select to open the STR setup window.
- Band  
Select to switch between “AM” or “FM”.
- FM mode\*<sup>1</sup>, \*<sup>2</sup>  
Select to switch between “Mono On” or “Mono Off”.
- Preset List  
Select to display the preset list.
- Preset Memory\*<sup>1</sup>, \*<sup>2</sup>  
Select to open the Memory window.

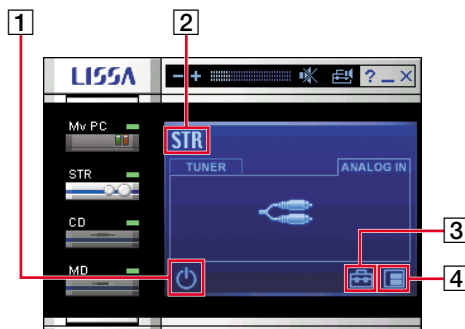
\*<sup>1</sup> This may be greyed out when STR-LSA1 is turned off.

\*<sup>2</sup> This may be greyed out when a sound source other than “Tuner” is selected.

(continued)

## STR (Analog in)

When you click the “ANALOG IN” tab in the STR Function View, you can listen to the sound of components connected to the STR-LSA1’s ANALOG IN connectors.



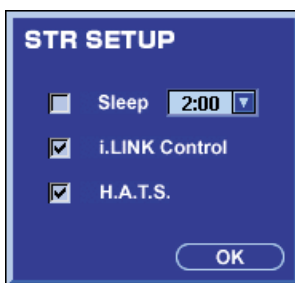
**1 Power switch**

**2 Ping display**

Click “STR” to display “▶▶◀◀” in the front panel display of STR-LSA1.

**3 STR setup button**

Click this button to display the STR setup window. You can use the Sleep Timer function, and set the i.LINK Control function and H.A.T.S. control function (refer to the operating instructions for STR-LSA1).



Click each function to be activated (a check appears). Click again to deactivate a function.

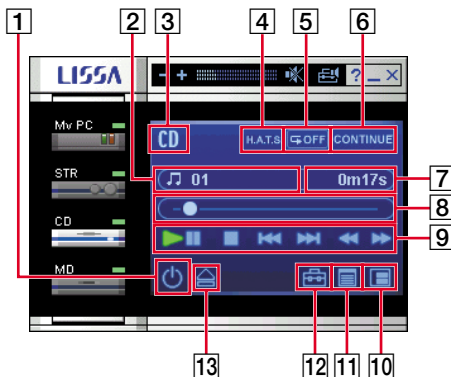
When you use the Sleep Timer function, click ▼ and select a desired time. While this function is activated, the remaining time is displayed and you cannot change the time to turn off.

(continued)

#### 4 Combination button

Click this button to switch to the Combination View. (only when MDS-LSA1 is attached to the i.LINK configuration)

### CD



#### 1 Power switch

#### 2 Disc/Track name display (name appears only for CD TEXT discs)

Click to display the play list and select a track.

#### 3 Ping display

Click "CD" to display "▶▶◀◀" in the front panel display of CDP-LSA1.

#### 4 H.A.T.S. indicator

It lights up while the H.A.T.S. control function is activated.

#### 5 Repeat button

Click this button to select ("RepeatAll"), ("Repeat1") or ("RepeatOff").

#### 6 Play mode button

Click this button to select "CONTINUE", "SHUFFLE" or "PROGRAM". The play mode cannot be changed during playback.

#### 7 Time display

Click to switch between the elapsed playing time or remaining time. The display differs according to the condition or play mode.

#### 8 Track position slide bar

Drag to the left or right for locating a desired point in a track.

(continued)

**9 CD operation buttons**

Play/Pause button



Stop button



AMS (Previous/Next) buttons



Fast reverse/Fast forward buttons

**10 Combination button**

Click this button to switch to the Combination View. (only when MDS-LSA1 is attached to the i.LINK configuration)

**11 Play list button**

Click this button to display the play list.

In Programme play mode, click this button to display the programme list.

**12 CD setup button (page 19)**

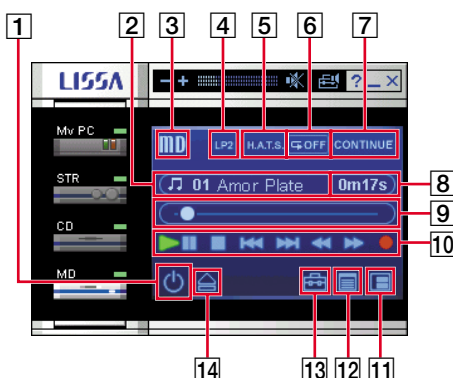
Click this button to display the CD setup window.

You can change the displayed language and make a programme.

**13 Eject button****Right-click menus**

- Attach  
Select to attach a component connected by i.LINK connecting cable to the i.LINK configuration.
- Detach  
Select to detach a component connected by i.LINK connecting cable from the i.LINK configuration.
- PowerOn/Off
- Open/Close
- Previous
- Play
- Stop
- Pause
- Next
- PlayMode  
Select to switch between "Continue", "Program" or "Shuffle".
- Repeat  
Select to switch between "RepeatOff", "Repeat1" or "RepeatAll".
- List  
Select to display the play list.
- SetUp  
Select to open the CD setup window.
- Disc Properties  
Select to open the disc properties window.

(continued)

**MD****1 Power switch****2 Disc/Track name display**

Click to display the play list and select a track.

**3 Ping display**

Click "MD" to display "▶▶◀◀" in the front panel display of MDS-LSA1.

**4 LP indicator**

The Rec Mode is displayed when the disc is stopped.

The Track Mode of the current track is displayed during playback or recording.

**5 H.A.T.S. indicator**

It lights up while the H.A.T.S. control function is activated.

**6 Repeat button**

Click this button to select ("RepeatAll"), ("Repeat1") or ("RepeatOff").

**7 Play mode button**

Click this button to select "CONTINUE", "SHUFFLE" or "PROGRAM". The play mode cannot be changed during playback or recording.

**8 Time display**

Click to switch between the elapsed playing time or remaining time.

The display differs according to the condition or play mode.

(continued)

**9 Track position slide bar**

Drag to the left or right for locating a desired point in a track.

**10 MD operation buttons**

Play/Pause button



Stop button



AMS (Previous/Next) buttons



Fast reverse/Fast forward buttons



Record button

**11 Combination button**

Click this button to switch to the Combination View. (only when another MDS-LSA1 is attached to the i.LINK configuration)

**12 Play list button**

Click this button to display the play list.

In Programme play mode, click this button to display the programme list.

**13 MD setup button (page 30)**

Click this button to display the MD setup window.

**14 Eject button****Right-click menus**

- Attach  
Select to attach a component connected by i.LINK connecting cable to the i.LINK configuration.
- Detach  
Select to detach a component connected by i.LINK connecting cable from the i.LINK configuration.
- PowerOn/Off
- Eject
- Previous
- Play
- Stop
- Pause
- Next
- Rec
- PlayMode  
Select to switch between "Continue", "Program" or "Shuffle".
- Repeat  
Select to switch between "RepeatOff", "Repeat1" or "RepeatAll".

(continued)

- List  
Select to display the play list.
- SetUp  
Select to open the MD setup window.
- All Erase  
Select to erase all tracks in the MD.
- Disc Properties  
Select to open the disc properties window.

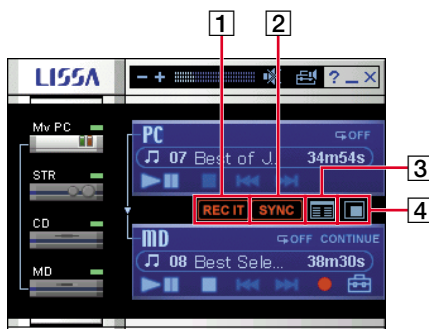
## Combination View

When you record to an MD, the Combination View is displayed instead of the Function View.

### Note

The repeat and play modes cannot be changed while the Combination View is displayed.

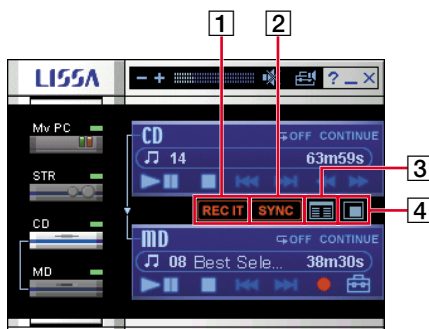
### My PC to MD Combination View



- 1 Rec it button**  
Click this button to record the current audio file.
- 2 Synchro button**  
Click this button to use the Synchro Recording function.
- 3 List button**  
Click this button to display the PC and MD play lists.
- 4 Function button**  
Click this button to switch to the Function View.

(continued)

## CD to MD Combination View



### 1 Rec it button

Click this button to record the current track.

### 2 Synchro button

Click this button to use the Synchro Recording function.  
“HIGH” appears when the deck is in high-speed CD Synchro-Recording mode.

### 3 List button

Click this button to display the CD and MD play lists.

### 4 Function button

Click this button to switch to the Function View.



## STR (Tuner/Analog in) to MD Combination View

### Tuner



### Analog in



**1 List button**

Click this button to display the preset and MD play lists.

**2 Function button**

Click this button to switch to the Function View.

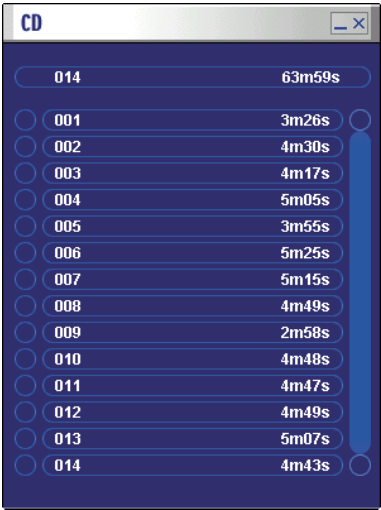
# Listening to a CD

## Listening to a CD using the Main Window


- 1 Click a CD icon in the Audio Rack View.
- 2 Click the Disc/Track name display in the Function View.  
A list of tracks on the CD appears.
- 3 Select a track you want to play in the play list.  
Play starts at the track you selected.

## Listening to a CD using the play list

- 1 Open the CD play list (page 12) in the Continue play.



(continued)

- 2 Double-click , the track number or playing time of the track you want to play on the CD play list.

Play starts at the track you double-clicked.

When you right-click a disc/track display and select “Properties”, the following information appears:

Disc: Total Track Number, Total Disc Time, Disc title\*,

Disc Artist\*

Track: Track Number, Track Playing Time, Track Title\*,

Track Artist\*

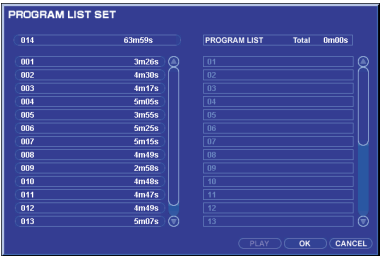
\* This appears only for CD TEXT discs.

## Playing tracks in a favourite order

- 1 Open the CD setup window (page 12) before playing a disc.



- 2 Click “Program list”.  
The program list set appears.



(continued)

- 
- 3** Drag and drop desired track displays from the CD play list into the programme list.

You can make a programme of up to 25 tracks on the CD.

When you double-click a desired track display, the track will be added to the end of the programme list.

- 4** Click "PLAY" to start playback.

To cancel the programme list, click "CANCEL".

When you click "OK", the programme list that you just made will be stored.

### **To erase a track from the programme list**

Right-click a desired track display and select "Erase".


To erase the entire programme, select "All Erase".

# Changing the displayed language

If you load a CD TEXT disc with multi-language capability, you can select the displayed language.

- 1 Open the CD setup window (page 12).



- 2 Click  and select a desired language in the language list.
- 3 Click "OK" to close the CD setup window.

## Notes

- The current displayed language appears only for CD TEXT discs.
- If the language memorised in a CD TEXT disc cannot be read, "Unknown Lang" appears. Titles may not be displayed properly for such discs.
- The selected language mode remains in the CDP-LSA1's memory. If you change the disc with one in which the selected language is not memorised, English is used as the displayed language (for most discs). Select the desired language again if necessary.

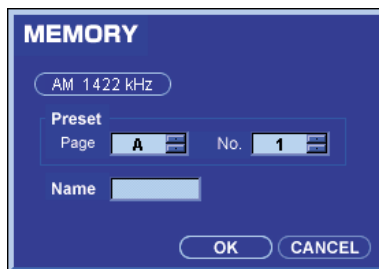
# Listening to the radio


## Listening to the radio in the Manual or Auto mode

- 1** Click the current STR icon in the Audio Rack View.
- 2** Click the “TUNER” tab in the Function View.  
The Tuner Function View appears.
- 3** Click the band button to select “FM” or “AM”.
- 4** Click the tuning mode button repeatedly to select “MANUAL” or “AUTO”.
- 5** Tune in a radio station.  
When “MANUAL” is selected, click the tuning buttons repeatedly to locate a station.  
When “AUTO” is selected, click the tuning button. The frequency changes while scanning for a station and scanning stops automatically when a station is tuned in.

## Presetting a radio station

- 1** Click “MEMORY” after tuning in a station (see above).  
The Memory window appears.



- 2** Click  repeatedly to enter a preset page and preset number for recording the station on the preset list.
- 3** Enter a station name.


(continued)

- 4** Click "OK" if the displayed contents are correct.  
The station is stored on the preset list.  
To cancel presetting the station, click "CANCEL".

## Preset tuning

- 1** Click the current STR icon in the Audio Rack View.
- 2** Click the "TUNER" tab in the Function View.  
The Tuner Function View appears.
- 3** Click the tuning mode button repeatedly to select "PRESET", and click the tuning buttons repeatedly to select a desired preset station.  
Or click the Frequency/Station name display and select a desired preset station in the preset list.

### Listening to the radio using the preset list

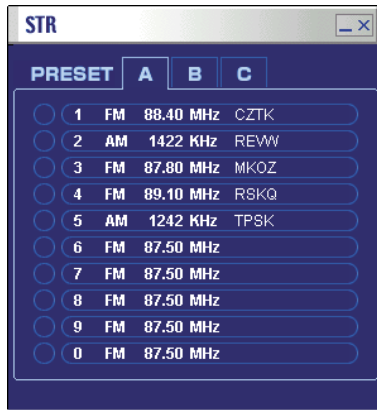
- 1** Open the preset list (page 8).
- 2** Click the preset tab ("A", "B", "C") to select a desired preset page.
- 3** Double-click  or a desired preset station display.

# Assigning a name to a station

## Notes

- You can only input alphanumeric characters and the following symbols:  
! " # \$ % & ' ( ) \* + , - . / : ; < = > ? @ [ \ ] \_ { | }  
ASCII characters (^ ' ~) cannot be input.
- Special characters that appear in the STR-LSA1 front panel display cannot be displayed on the monitor of the computer. When there are special characters, they are replaced by ASCII characters that are most similar in appearance.
- When an RDS broadcast includes station name information, that name is displayed in place of the previously assigned preset station name.

- 1 Open the preset list (page 8).



- 2 Click the preset tab ("A", "B", "C") to select a desired preset page.
- 3 Select a preset station to which you want to assign a name.
- 4 Click the station name in the preset station display.  
You are brought into the edit mode in which you can enter a station name.

(continued)



- 5** Enter a station name.  
You can copy and paste an existing string using the menu which appears when you right-click the station name.
- 6** Press the Enter key.  
The station name you entered is saved.

### To cancel assigning a name

Press the Esc key.

### Right-click menus for the preset list

- Memory  
Select to open the Memory window.
- Clear  
Select to clear the preset station with the Delete key.  
After selecting "Clear", press the Delete key on the computer keyboard.  
You can also select two or more preset stations by clicking a preset station display while pressing down the Ctrl key
- All Clear  
Select to clear all the preset stations in the displayed preset page.
- Name In  
Select to assign a name to the preset station.
- FM mode  
Select to switch between "Mono On" or "Mono Off" for the preset station.

### To copy using drag & drop

You can copy a preset station by drag and drop.

If you drag a preset station and point to the preset tab ("A", "B", "C"), you can copy it in a different preset page.

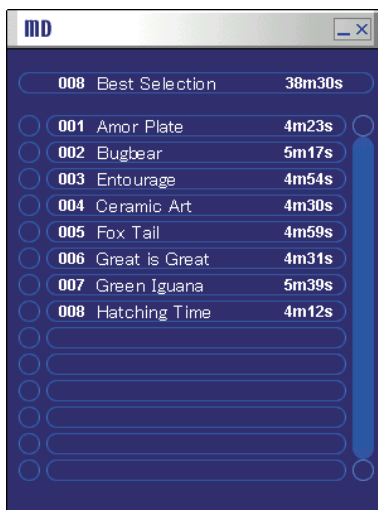
# Listening to an MD

## Listening to an MD using the Main Window


- 1** Click an MD icon in the Audio Rack View.
- 2** Click the Disc/Track name display in the Function View.  
A list of tracks in the MD appears.
- 3** Select a track you want to play in the play list.  
Play starts at the track you selected.

## Listening to an MD using the play list

- 1** Open the MD play list (page 14) in the Continue play.



(continued)

- 2 Double-click , the track number or playing time of the track you want to play on the MD play list.

Play starts at the track you double-clicked.

When you right-click a disc/track display and select “Properties”, the following information appears:

Disc: Disc Type, Total Track Number, Disc Name,

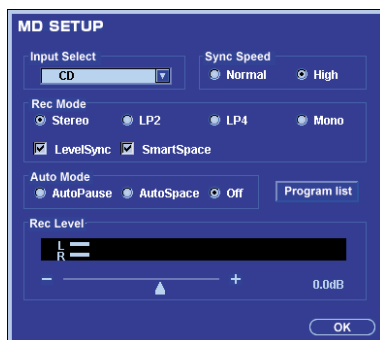
Total Disc Time, Disc Remain Time

Track: Track Number, Track Playing Time, Track Name,

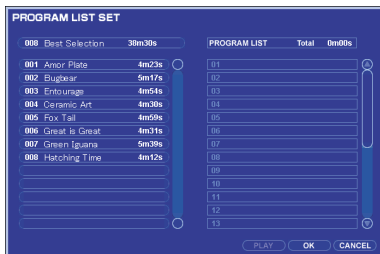
Track Mode

## Playing tracks in a favourite order

- 1 Open the MD setup window (page 14) before playing a disc.



- 2 Click “Program list”.
- The program list set appears.



(continued)


- 3** Drag and drop desired track displays from the MD play list into the programme list.  
You can make a programme of up to 25 tracks in the MD.  
When you double-click a desired track display, the track will be added to the end of the programme list.
- 4** Click "PLAY" to start playback.  
To cancel the programme list, click "CANCEL".  
When you click "OK", the programme list that you just made will be stored.

### To erase a track from the programme list

Right-click a desired track display and select "Erase".  
To erase the entire programme, select "All Erase".


## Auto Pause Play

This function causes playback to pause at the end of each track.

- 1** Open the MD setup window (page 14) before playing a disc.
- 2** Click "AutoPause" in the Auto Mode (a check appears).
- 3** Click "OK" to close the MD setup window.
- 4** Click .

## Auto Space Play

This function causes blanks inserted between tracks during playback.

- 1** Open the MD setup window (page 14) before playing a disc.
- 2** Click "AutoSpace" in the Auto Mode (a check appears).
- 3** Click "OK" to close the MD setup window.
- 4** Click .

# Assigning a name to an MD

## Notes

- You can only input alphanumeric characters and the following symbols:  
! " # \$ % & ' ( ) \* + , - . / : ; < = > ? @ \_ `
- If an MD encoded with the letters other than those above is played back, the correct letters will not be displayed.
- If the MD write protect tab is set to protect, character input, recording, editing, etc. will not be possible. Slide the write protect tab so that character input is possible.
- This software allows up to 200 characters to be stored for each disc title and track title.
- Names cannot be assigned during recording pause.

- 1** Open the MD play list (page 14).
- 2** Select a disc/track display to which you want to assign a name.
- 3** Click the disc/track name you selected in step 2.  
You are brought into the edit mode in which you can enter a disc/track name.
- 4** Input a desired name.  
You can copy and paste an existing string using the edit menu which appears when you right-click the disc/track name.
- 5** Press the Enter key.  
The disc/track name you entered is saved and you are ready to enter the next track name.

## To cancel assigning a name

Press the Esc key.

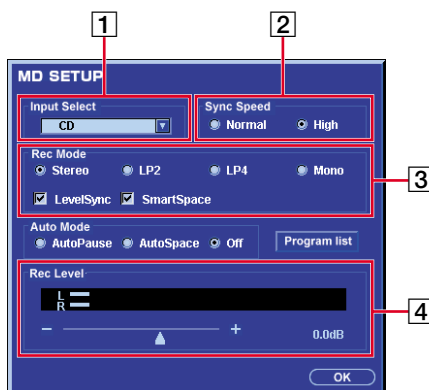
# Recording to an MD

## Notes

- If the MD write protect tab is set to protect, you cannot record to the MD. Slide the write protect tab so that recording is possible.
- When “Sony i.LINK Audio Device” is selected as the preferred playback device in the “Audio” tab of the “Multimedia Properties” window (or “Sounds and Multimedia Properties” window for Windows2000), warnings and other sounds produced by the Windows operating system or other softwares are recorded to an MD also. To avoid this, it is recommended that you select “PC sound card” or another sound card before you start recording.
- To ensure proper recording, we recommend you quit all other softwares before you start recording.
- When the setup menu on MDS-LSA1 is set to “T.Mark Lsync”, a track number is automatically marked for every blank of about 1.5 seconds in a track. For details, refer to the operating instructions for MDS-LSA1.

## Making setups for recording

- 1 Open the MD setup window (page 14).



- 1 **Input Select**

Click to select a recorded component.

- 2 **Sync Speed**

Click to set a recording speed of Synchro-Recording. You can specify “Normal” (normal-speed dubbing) or “High” (high-speed dubbing) for CD Synchro-Recording.

(continued)


**3 Rec Mode**

Click to select a recording mode, and set the Level Synchro and Smart Space functions.

You can choose any of the four following recording modes: "Stereo" for stereo recording at normal time, "LP2" for stereo recording at 2 × normal time, "LP4" for stereo recording at 4 × normal time or "MONO" for monaural recording.

**4 Rec Level**

Click +/– to adjust the recording level.

You can also drag  to the left or right for adjustment.

**2** Set each item as necessary.

**3** Click "OK" to close the MD setup window.

## Recording from a CD to an MD

**1** Click  in the CD Function View.  
The Combination View appears.







**2** Click **SYNC**.  
The MD stands by for recording and the CD stands by for playback.

**3** Click MD's  in the Combination View.  
Recording starts.

(continued)



## Recording a desired CD track to an MD

- 1 Click  in the CD Function View.
- 2 Click  to open the play list.
- 3 Drag desired track displays from the CD play list and drop them into the MD play list.  
You can also select two or more tracks at a time by clicking desired track displays while pressing down the Ctrl key.
- 4 Click .
- 5 Click MD's  in the Combination View.  
Recording starts.

### Notes

- When recording CD tracks to an MD in this way, the selected CD tracks will overwrite the CD programme list that was made on CDP-LSA1.
- You can select up to 25 tracks.
- After this operation, the CD play mode automatically changes to "Continue".


## Recording the current CD track to an MD

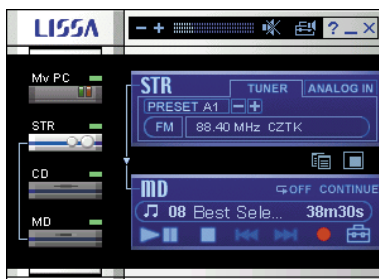
- 1 Click  in the CD Function View while playing a CD.
  - 2 Click .
- After a while, recording starts from the beginning of the current track.

## To stop recording

Click MD's  in the Combination View.

## Recording from the radio to an MD



- 1 Click  in the Tuner Function View.  
The Combination View appears.



- 2 Tune in the radio programme you want to record using the Tuner Combination View (pages 22 and 23).

(continued)




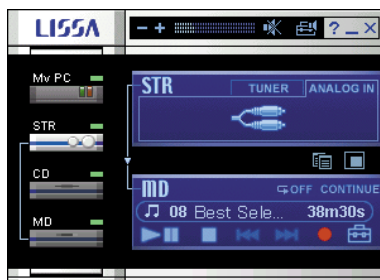
- 3 Click MD's  in the Combination View.  
The MD stands by for recording.
- 4 Click MD's  in the Combination View.  
Recording starts.



### To stop recording

Click MD's  in the Combination View.

## Recording from the component connected to the STR-LSA1's ANALOG IN connectors to an MD

- 1 Click  in the Analog in Function View.  
The Combination View appears.



- 2 Prepare an audio component.
- 3 Click MD's  in the Combination View.  
The MD stands by for recording.
- 4 Click MD's  in the Combination View.  
Recording starts.


### To stop recording

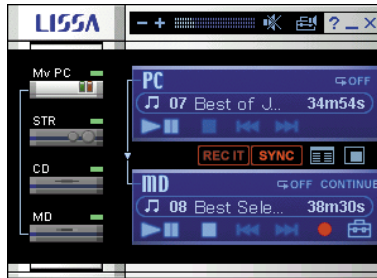
Click MD's  in the Combination View.



## Recording from your computer to an MD

### Note





You cannot record audio files from your computer to an MD with the high-speed Synchro-Recording function.

- 1 Click  in the PC Function View.  
The Combination View appears.



- 2 Click .
- 3 Click MD's  in the Combination View.  
Recording starts.

### Recording a desired audio file to an MD

- 1 Click  in the PC Function View.
- 2 Click  to open the play list.
- 3 Drag desired track displays from the PC play list and drop them into the MD play list.  
You can also select two or more audio files at a time by clicking desired track displays while pressing down the Ctrl key.
- 4 Click .
- 5 Click MD's  in the Combination View.  
Recording starts.

(continued)

---

## Recording the current audio file to an MD

- 1 Click  in the PC Function View while playing an audio file.
- 2 Click .

After a while, recording starts from the beginning of the current audio file.

## To stop recording

Click MD's  in the Combination View.

# Editing recorded MDs


## Notes

- If the MD write protect tab is set to protect, you cannot edit the MD. Slide the write protect tab so that editing is possible.
- No editing is possible when the Shuffle or Programme play is selected. Be sure to select the Continue play before editing the MD.

## Moving recorded tracks (MOVE)

- 1 Open the MD play list (page 14).
- 2 Right-click a desired track display to display the edit menu.
- 3 Select "Move".  
The Move window appears.



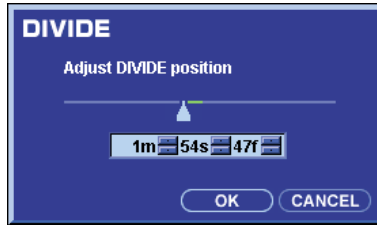
- 4 Enter the track number of the location you want to move the track to.  
You can also use  to enter the track number.
- 5 Click "OK".  
The selected track is moved to the specified position.  
To cancel moving the track, click "CANCEL".

## To move a track using drag & drop



In step 2, drag a desired track display and drop it at the desired position.

## Dividing recorded tracks (DIVIDE)

- 1** Open the MD play list (page 14).
- 2** Right-click a desired track display to display the edit menu.
- 3** Select "Divide".  
The Divide window appears.

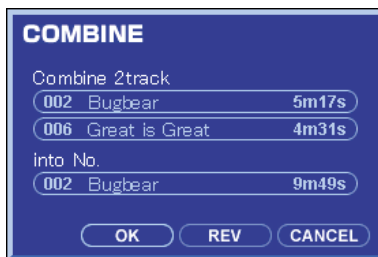


The rehearsal playback starts.

- 4** Drag  to the left or right to adjust the position to divide.  
You can also use  to enter the time at which the track is divided.
- 5** Click "OK" when the rehearsal playback proves satisfactory.  
The track is divided.  
To cancel dividing the track, click "CANCEL".

## Combining recorded tracks (COMBINE)

- 1** Open the MD play list (page 14).
- 2** Select two track displays you want to combine.  
Click the first track display, then while pressing down the Ctrl key, click the latter track display.
- 3** Right-click one of the selected track displays to display the edit menu.
- 4** Select "Combine".  
The Combine window appears.



The rehearsal playback starts.

To change the order of the combined tracks, click "REV".

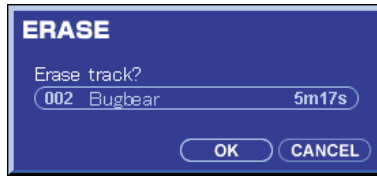
- 5** Click "OK" if the displayed tracks are correct.  
The selected tracks are combined.  
To cancel combining the tracks, click "CANCEL".

### Note

Tracks recorded in different recording mode cannot be combined.

## Erasing recorded tracks (ERASE)

- 1** Open the MD play list (page 14).
- 2** Right-click a desired track display to display the edit menu.  
To select two or more tracks, click track displays while pressing down the Ctrl key, and right-click one of the track displays you clicked.
- 3** Select "Erase".  
The Erase window appears.

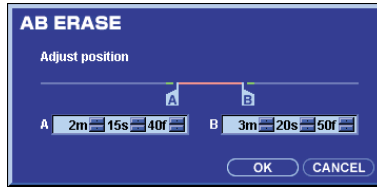


To erase all tracks, select "All Erase".

- 4** Click "OK" if the displayed message is correct.  
The selected track(s) is erased.  
To cancel erasing the track(s), click "CANCEL".

## Erasing part of a track (A-B ERASE)

- 1** Open the MD play list (page 14).
- 2** Right-click a desired track display to display the edit menu.
- 3** Select “A-B Erase”.  
The A-B Erase window appears.



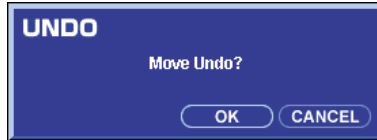
The rehearsal playback starts.

- 4** Drag or to the left or right for adjustment.  
Point A and point B are temporarily put together and the rehearsal playback starts again.  
You can also use to enter the times for specifying the A-B part.
- 5** Click “OK” when the rehearsal playback proves satisfactory.  
The specified A-B part is erased.  
To cancel erasing the A-B part, click “CANCEL”.




## Undoing the last edit (UNDO)

- 1** Right-click the MD play list to display the edit menu after an edit.
- 2** Select "Undo".  
The Undo window appears.



- 3** Click "OK" if the displayed message is correct.  
The contents of the MD are restored to the condition before the edit.  
To cancel undoing the edit, click "CANCEL".

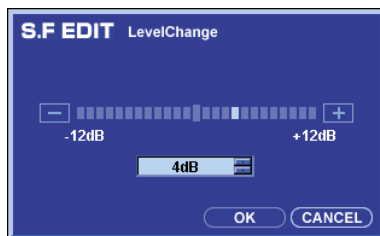
### Notes

- You cannot undo an edit if you do any of the following after the edit:
  - Do another edit.
  - Click , **SYNC** or **REC IT**.
  - Turn off MDS-LSA1 or eject the MD.
  - Disconnect the mains lead.
- You cannot restore the contents of the MD to the condition they were in prior to the S.F EDIT, even by undoing the edit.




## Changing the track level after recording (S.F EDIT)

### LevelChange

- 1** Open the MD play list (page 14).
- 2** Right-click a desired track display to display the edit menu.
- 3** Point to “S.F Edit” and select “Track Level”.  
The Level Change window appears.



The rehearsal playback starts.

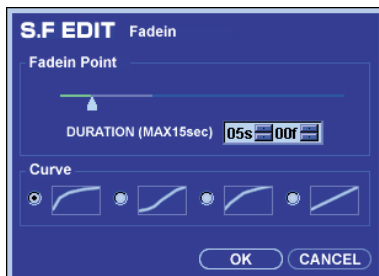
- 4** Click  /  repeatedly to change the track level.  
You can also use  to enter the level for changing the track level.
- 5** Click “OK” if the displayed track level is correct.  
The original track level changes to the specified level.  
To cancel changing the track level, click “CANCEL”.

### FadeIn/FadeOut

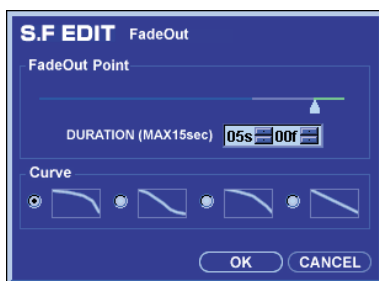
- 1** Open the MD play list (page 14).
- 2** Right-click a desired track display to display the edit menu.

(continued)



- 3** Point to “S.F Edit” and select “Fade In” or “Fade Out”.  
The Fade In window appears when “Fade In” is selected.



The Fade Out window appears when “Fade Out” is selected.



The rehearsal playback starts.

- 4** Drag  to the left or right for locating the end point of increase or start point of decrease of the level.  
You can select a fade in or fade out point of 1 to 15 seconds.  
You can also use  to enter the time for locating a desired point.
- 5** Select the type of curve for the fade in or fade out.
- 6** Click “OK” if the displayed contents are correct.  
The original track level changes to the level you set in steps 4 and 5.  
To cancel changing the track level, click “CANCEL”.

## Notes

- You cannot change the level of tracks recorded in LP2 or LP4 mode.
- Changing the track level repeatedly using the S.F EDIT function results in poor sound quality.
- Once the track level has been changed, it will not return exactly to the original level even if you perform the S.F EDIT function again.

# Listening to audio files

You can output audio files stored on your computer through STR-LSA1 and create play lists for audio files stored on your computer.

This software supports the playback of audio files with the following extensions:

mp3, wma, wav

## Note

Depending on the software used to create an audio file, you may not be able to use the Digital Link Manager to play the file.

## Registering audio files to a play list

- 1** Click the My PC icon in the Audio Rack View.
- 2** Open the PC play list (page 7).



- 3** Drag and drop desired audio files into the play list.  
You can register up to 255 audio files in a single play list.

(continued)

### **To register audio files to a play list using the right-click menu**

Select “Add music file” in the right-click menu. Then select an audio file and click “Open”.

The selected audio file is added to the play list.

### **To move an audio file within a play list**

Drag an audio file and drop it at the desired position within the play list.

### **To erase an audio file from a play list**

Select “Erase” in the right-click menu.

To erase all audio files from a play list, select “All erase”.

### **To save a play list**

By selecting “Save playlist” in the right-click menu, you can store as a play list the newly created playing order of audio files.

The play list is loaded automatically the next time you start up the software.

### **Tip**

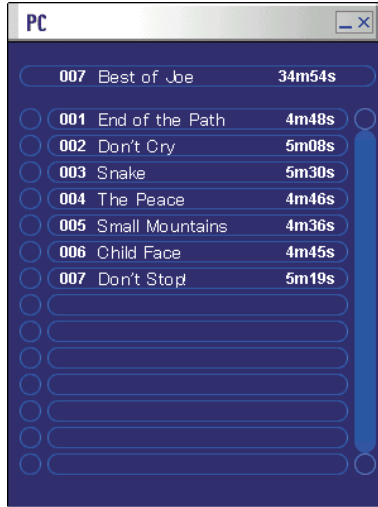
The file name of an audio file is displayed as a track name (or a list name). Some audio files may include name information, but this software does not support the display of this information.


## **Listening to an audio file using the Main Window**

- 1** Click the My PC icon in the Audio Rack View.
- 2** Click the List/Track name display in the Function View.  
A list of tracks on the play list appears.
- 3** Select an audio file you want to play in the play list.  
Play starts at the audio file you selected.

## Listening to an audio file using the play list

- 1 Open the PC play list (page 7).

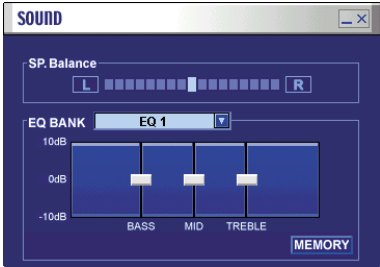


- 2 Double-click , the track number or playing time of the audio file you want to play on the PC play list.  
Play starts at the audio file you double-clicked.

# Adjusting the sound

## Speaker balance (SP.Balance)

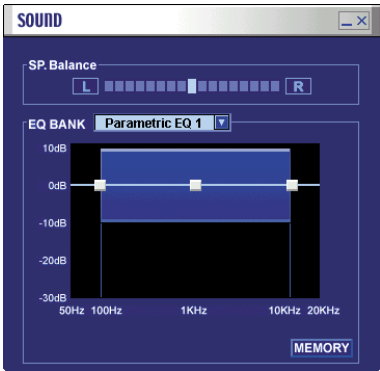
- 1 Open the sound window (page 4).





- 2 Click **L** / **R** repeatedly to adjust the speaker balance.

## Parametric equalizer (Parametric EQ)


- 1 Open the sound window (page 4).
- 2 Click **v** and select "Parametric EQ 1", "Parametric EQ 2" or "Parametric EQ 3".




(continued)

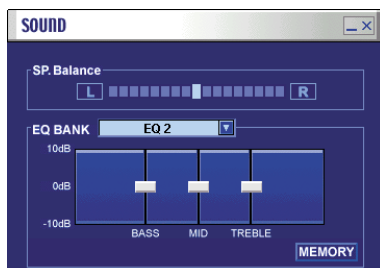
- 3** Drag  in a desired direction for adjustment.
- Faintly coloured lines: The waveform of each control  
Dark coloured line: The composite waveform for all three controls
- When you right-click , you can select the type of slope (“Narrow”, “Middle”, “Wide”).
- To return to the original sound, select “EQ FLAT” in the EQ bank.


### Note

When the dark coloured line reaches 10 dB,  cannot be dragged to increase the level further.

## Equalizer (EQ)

- 1** Open the sound window (page 4).
- 2** Click  and select one of EQs (EQ 1 - 5).

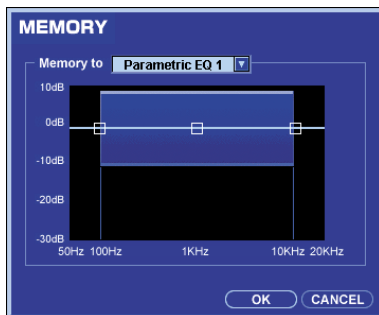


- 3** Drag  up or down to adjust each tone.
- To return to the original sound, select “EQ FLAT” in the EQ bank.




## Presetting an adjusted sound

- 1 Click “MEMORY” after adjusting a Parametric EQ or EQ. The Memory window appears.



- 2 Select a desired Parametric EQ or EQ number in the EQ bank. The current setting is displayed.
- 3 Click “OK”.  
The adjusted sound is stored in the EQ bank.  
To cancel presetting the adjusted sound, click “CANCEL”.

## Using the EQ bank

- ➔ Click  and select a desired Parametric EQ or EQ number in the EQ bank.  
The sound changes to the preset sound you selected.